

Julie Wyman



Agile Lessons from Antarctica:
Responding to Change over Following a Plan



Agile Lessons from Antarctica:

*Responding to Change
over Following a Plan*

Julie Wyman



Using Mentimeter

1. Grab your phone / open a tab
2. Go to **www.menti.com**
3. Enter code **1164 6611**
4. Submit your answers



Or scan the QR code

**No plan survives contact
with the enemy.**

**Plans are useless, but
planning is indispensable.
- Dwight D. Eisenhower**

**If you fail to plan, you
plan to fail.**

**A goal without a plan is just a wish.
- Antoine de Saint-Exupéry**

**Change is inevitable,
change is constant.
- Benjamin Disraeli**

**The only constant
in life is change.**

Agile Manifesto Recap

Manifesto for Agile Software Development

We are uncovering better ways of developing software by doing it and helping others do it. Through this work we have come to value:

Individuals and interactions over processes and tools
Working software over comprehensive documentation
Customer collaboration over contract negotiation
Responding to change over following a plan

That is, while there is value in the items on the right, we value the items on the left more.

<https://agilemanifesto.org/>

Pair Discussion





Pair Discussion

05:00

- What does this Agile Manifesto value **mean to you?**
- What's one of your **examples of balancing** the need to plan with the need to respond to change?



“Just enough” Planning

Discussion

Understanding

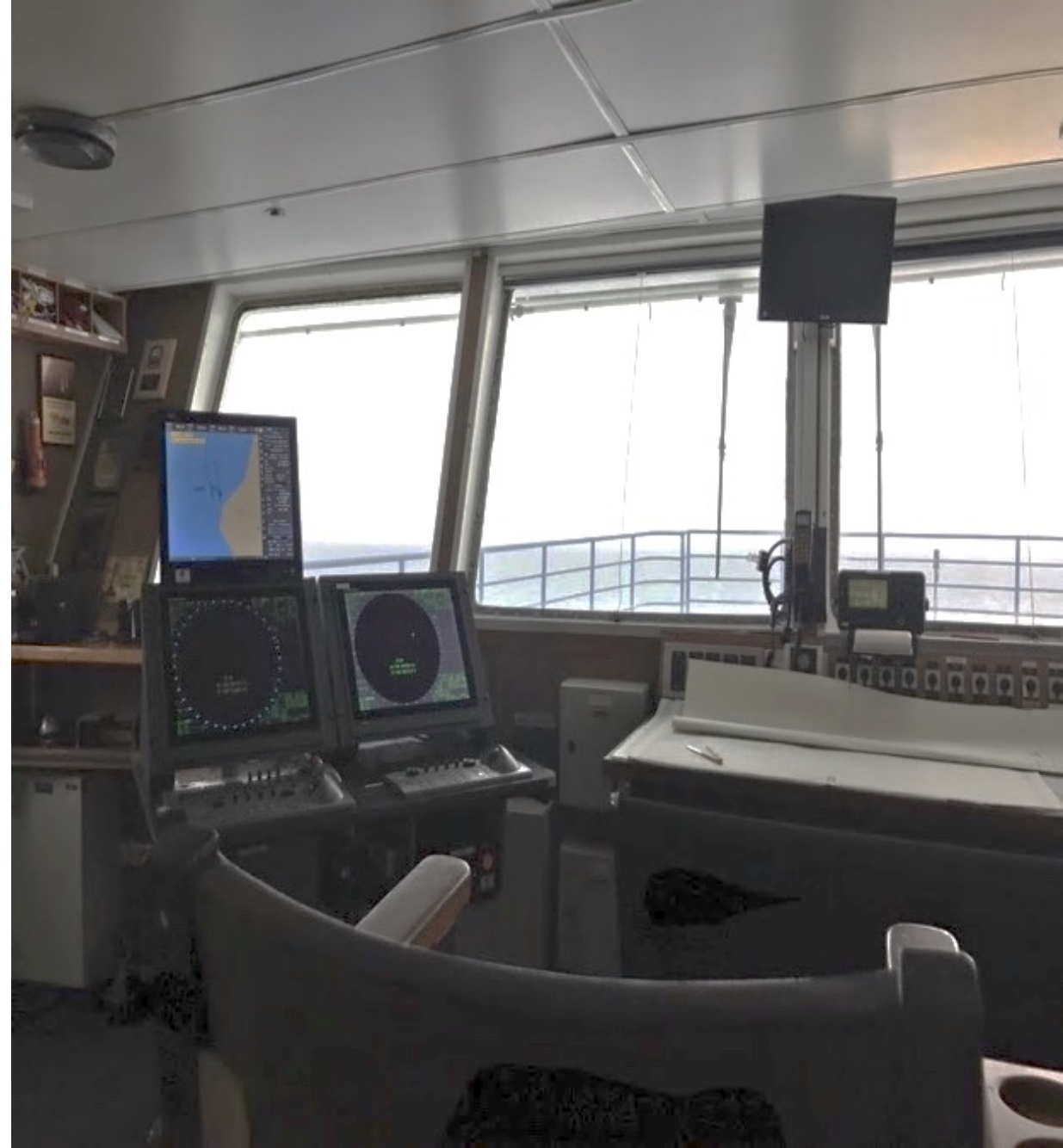
Clear **goal**



When change comes...

Keep the **goal** in mind

Adapt the approach



Planning & Change in the context of an Antarctic Cruise

Planning

- Highly detailed plans
- Environmental regulations
- Passenger safety and experience



Remote



Environmental protection



Passenger safety



Passenger experience



8:30

We hope to land and Zodiac cruise **Portal Point**

This site is named for its accessibility to the Antarctic Peninsula's glacial plateau. Yes, folks, this will be our first attempt at landing on the continent. The beautiful slopes of snow and ice are pristine and untouched, a dreamlike landscape perfect for a stroll, with spectacular nunataks rising out of the glacial masses.

Disembarkation:

1) Amundsen 2) Charcot 3) Gerlache 4) Nordenskjöld 5) Scott 6) Shackleton

12:30 - 13:30

Lunch is served in the Dining Room (300 Level)

14:30

We aim to Zodiac cruise at **Enterprise Island**

Located in the beautiful glaciated surroundings of Wilhelmina Bay, this island is named for the enterprising spirit of the whalers who used its sheltered bays as anchorages for their ships in the early 1900's. We hope to Zodiac cruise and take in the scenery, wildlife and history, including the wreck of the factory whaling ship *Gouvernoren*.

PACKING CHECKLIST

Use the convenient list below to ensure you have not missed any important items we have mentioned. Check off each item as you pack it into your luggage.

LIST OF ESSENTIALS

- Gloves (2 pairs minimum)
- Hat that covers ears
- Scarf or other face protection
- Sunglasses with UV protection
- Sunscreen
- Waterproof pants or insulated ski/snowboard pants (mandatory for Zodiac cruising)
- Warm pants
- Long underwear
- Several pairs of long wool socks
- Several pairs of silk or polypropylene socks
- Sweaters and fleece tops
- Comfortable turtlenecks and t-shirts
- Your prescription medicines
- Non-slip close-toed shoes for onboard

LIST OF SUGGESTED ITEMS

- Waterproof, lightweight backpack or daypack
- Swimsuit
- Binoculars
- Camera with extra batteries
- Extra memory cards or film
- Extra pair of prescription glasses
- Plastic bags with zippers
- Ecologically friendly laundry soap
- Small medical kit
- Earplugs, in case of noisy cabin mates
- Small alarm clock or watch with an alarm
- Seasickness, indigestion, headache or other medicines
- Your preferred water bottle
- Fitness gear

Be prepared

Enjoyable sunny days can **swiftly change** to cold, windy storms with snow flurries and rolling seas.

Pack to dress in layers so you are **prepared for these rapid weather changes.**



Trip Takeaways

- 1) Planning is still necessary**
- 2) The right planning can make responding to change easier**

Responding to Change

- Many forces out of team's control
- New information





8:30

We **hope** to land and Zodiac cruise **Portal Point**

This site is named for its accessibility to the Antarctic Peninsula's glacial plateau. Yes, folks, this will be our **first attempt** at landing on the continent. The beautiful slopes of snow and ice are pristine and untouched, a dreamlike landscape perfect for a stroll, with spectacular nunataks rising out of the glacial masses.

Disembarkation:

- 1) Amundsen 2) Charcot 3) Geriache 4) Nordenskjöld 5) Scott 6) Shackleton

12:30 - 13:30

Lunch is served in the Dining Room (300 Level)

14:30

We **aim** to Zodiac cruise at **Enterprise Island**

Located in the beautiful glaciated surroundings of Wilhelmina Bay, this island is named for the enterprising spirit of the whalers who used its sheltered bays as anchorages for their ships in the early 1900's. We **hope** to Zodiac cruise and take in the scenery, wildlife and history, including the wreck of the factory whaling ship *Gouvernoren*.

Expectation setting



Trip Takeaways

- 1) Planning is still necessary
- 2) The right planning can make responding to change easier
- 3) Set expectations early and often**

Example:
An ever-changing day
in Antarctica

Daily Goal: See Gentoo Penguins



Penguin Pop Quiz: Find the Gentoo!

Menti: **1164 6611**

A



B



C



Penguin Pop Quiz: Find the Gentoo!

Menti: **1164 6611**

Gentoo



Chinstrap



Adélie



Goal:

See Gentoo Penguins

- **Plan A:** Announced before dinner
- **Plan B:** Announced at wake up
- **Plan C:** Announced during breakfast



Trip Takeaways

- 1) Planning is still necessary
- 2) The right planning can make responding to change easier
- 3) Set expectations early and often
- 4) Keep the goal,
adapt the approach**











Whale sighting!

And we're on to **Plan D**

Sometimes it's worth
changing the goal
to take advantage of or adapt to
new circumstances



Ernest Shackleton: Endurance

- Continuous need to respond to change
- Change in goal due to **significant** changes in circumstance

Image: <https://www.smithsonianmag.com/smart-news/antarctic-research-ship-will-search-wreck-shackletons-endurance-180968780/>



Ernest Shackleton: Endurance

- Continuous need to respond to change
- Change in goal due to **significant** changes in circumstance

Image: <https://www.npr.org/2022/03/09/1085432575/endurance-ship-found-ernest-shackleton>; *Falklands Maritime Heritage Trust & National Geographic*

Trip Takeaways

- 1) Planning is still necessary
- 2) The right planning can make responding to change easier
- 3) Set expectations early and often
- 4) Keep the goal, adapt the approach
- 5) When circumstances necessitate, change the goal**

Stretch Break



Empathy is key
when it comes to change



7 Jan

Frei Station, King
George Island

19:45













Increased empathy...change is hard

7 Jan	Frei Station, King George Island	19:45	Disembarkation – Just Kidding	62° 12' S / 058° 57'W	03:21/22:43
8 Jan	Maxwell Bay, King George Island	21:30-23:00	ZC – Beautiful evening light, feeding Humpback Whales.	62° 12' S / 058° 54'W	03:23/22:41
10 Jan	Fei and Bellinghausen Station, King George Island	09:30-12:30	ZL, ZC – Extended hike through a wetland to a beach with Elephant Seals. Exploring around the scientific bases.	62° 12' S / 058° 57'W	03:29/22:38
10 Jan	Fildes Straight	15:00-17:00	ZC – Interesting volcanic geology, narrow water way, Chinstrap Penguins, Weddell Seals.	62° 13' S / 059° 52'W	03:29/22:38
11 Jan	Robert Point, Robert Island	15:00-18:00	ZL – Elephant Seals, nesting Southern Giant Petrels.	62° 26' S / 059°22'W	03:31/22:36
12 Jan	Arctowski Station, King George Island	9:30-12:15	ZL –Adélie, Chinstrap and Gentoo penquins, friendly station personnel.	62° 08' S / 058° 07'W	03:34/22:34

Actual disembarkation: January 13th, 11:30pm

Trip Takeaways

- 1) Planning is still necessary
- 2) The right planning can make responding to change easier
- 3) Set expectations early and often
- 4) Keep the goal, adapt the approach
- 5) When circumstances necessitate, change the goal
- 6) Keep empathy at the forefront**



Small Group Discussion



Small Group Discussion

05:00

- What are some **examples** from your own experiences that can help increase your **empathy muscle**?
- What **lessons** can we apply from how people respond to change in **non-work scenarios**?
- Do you find that you respond to change **differently** when at work vs. in other scenarios? **Why or why not?**

Trip Takeaways: Recap

Trip Takeaways:

Responding to change
OVER
following a plan

Sketch Note by: @josephsmorrison













Contact

Julie Wyman

julie.wyman@appian.com

Connect:

- <https://www.linkedin.com/in/julie-wyman/>

Presentations:

- <https://www.slideshare.net/JulieWyman3>



Questions?



The image shows a low-angle shot of a modern glass skyscraper against a clear blue sky. The Appian logo is mounted on the upper part of the building's facade, rendered in a dark, three-dimensional font. The building's glass panels reflect the sky and surrounding environment.

appian

appian

A leader in low-code.